

# Powys Community Endowment Fund

Funding for individuals, community and voluntary organisations



This document was written by **Community Foundation Wales**. It is an easy read version of '**Powys Community Endowment Fund**'.

**2024**

# About this booklet



This is an easy read document. You may still need support to read it. Ask someone you know to help you.



Where the document says **we**, this means **Community Foundation Wales**. For more information contact:



**Website:** [www.communityfoundationwales.org.uk](http://www.communityfoundationwales.org.uk)



**Email:** [grants@communityfoundationwales.org.uk](mailto:grants@communityfoundationwales.org.uk)



**Phone:** 02920 379580



[Easy Read Wales](#) made this document into Easy Read using **Photosymbols**. [To tell us what you think about this easy read version, click here.](#)

[Photosymbols Licence number 403527247](#)

# Contents

<b>Introduction .....</b>	<b>4</b>
<b>Stanley Bligh Memorial Fund aims.....</b>	<b>6</b>
<b>Former Girls Grammar School, Brecon Fund .....</b>	<b>9</b>
<b>The Montgomeryshire District Trust Fund .....</b>	<b>12</b>
<b>How to apply for these funds.....</b>	<b>15</b>
<b>Funding for more than 1 year .....</b>	<b>17</b>
<b>Core funding.....</b>	<b>18</b>
<b>The Wellbeing of Future Generations Act 2015 .....</b>	<b>19</b>
<b>Hard words .....</b>	<b>22</b>

# Introduction



This document is about the **Powys Community Endowment Fund**



This fund is made up of 3 different funding pots:

- Stanley Bligh Memorial Fund
- Former Girls Grammar School, Brecon Fund
- The Montgomeryshire District Trust Fund

There is more information about each funding pot in this document. It covers:



- The aim of the funds.



- Who can apply.



- How much you can apply for.



- How to apply.



Each fund supports different types of projects in different areas.



You do not need to apply to a specific funding pot. We will look at your application and decide which funding pot is right for what you want to do.

# Stanley Bligh Memorial Fund aims

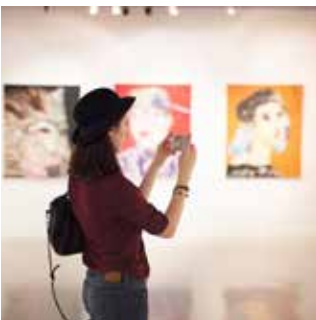
This fund supports education and studies about:



- **Forestry** – managing forests and woodland.



- **Agriculture** - farming.



- **Technical subjects in the arts or sciences** – like engineering, technology, or environment studies.



- **Vocational training in the arts or sciences** – learning the skills of a particular job.

## How much can you apply for?



Groups can get up to 1 thousand 500 pounds.

In the past this fund has paid for things like:



- Course fees.



- Buying equipment.



- Travel.



- Running costs of a community project.

## Who can apply for the Stanley Bligh Memorial Fund



- Community and voluntary organisations.



- Based in Powys.

We like applications from groups working with people who:



- Live in Brecknockshire.



- Or who have gone to a Brecknockshire secondary school for at least 2 years.



# Former Girls Grammar School, Brecon Fund



This fund supports people living in the area that used to be called the County of Brecknockshire.



The fund is for education projects.

## How much can you apply for?



Groups can get up to 1 thousand 500 pounds.

In the past this fund has paid for things like:



- Course fees.



- Buying equipment.



- Music lessons and musical instruments.



- Travel.



- Running costs of a community project.

## Who can apply for the Former Girls Grammar School, Brecon Fund



- Individuals, community, and voluntary organisations.



- Based in Brecknockshire.

# The Montgomeryshire District Trust Fund



The aim of this fund is to improve life for people living in Montgomeryshire.



The fund will support projects that provide facilities for fun activities.

## How much can you apply for?



Groups can get up to 1000 pounds.

In the past this fund has paid for things like:



- Buying equipment.



- Small building work – for example, building a play area.



- Adapting buildings, for example putting in wheelchair ramps.

## Who can apply for the Montgomeryshire Trust Fund



- Community groups, voluntary organisations and local charities.



- Based in Montgomeryshire.

In the past this fund has supported:



- Children and youth groups.

- Community centres and village halls.



- Arts groups.

- Sports clubs.



- Play and leisure groups.

# How to apply for these funds



You must fill out an online application form. You can get this on our website: [communityfoundationwales.org.uk/grants/powys-community-endowment-fund](https://communityfoundationwales.org.uk/grants/powys-community-endowment-fund)

## Important things to know:



- We cannot pay for anything that has happened before:



- We send you an offer letter.



- You send us a signed copy of the terms and conditions.



- You cannot use this fund to support other groups and charities



- You must spend all the money within 1 year of getting our offer letter.



- You must show clearly in your application why this money is needed.



# Funding for more than 1 year



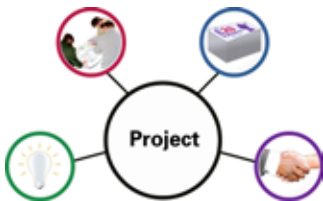
You can apply for up to 3 years of funding from this fund. We call it **Multiple Year Funding**.



You can still use this funding for 1 year projects. And for buying small items and things you need that meet the aims of this fund.



If you want funding for 3 years, you will need to fill out the extra section of the application form.



You need to explain how you plan to grow your project over the 3 years.



If you are not awarded 3 year funding, you may still get funding for 1 year.

# Core funding



Core funding covers the running costs of your organisation. It can be spent on things like staff wages and bills.



It can be hard to find core funding.

Groups can now apply for funding towards their core costs for up to 3 years. As long as:

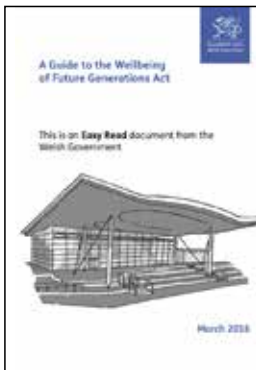


- You can provide your accounts for the last 12 months.



- The amount you apply for is less than half of your yearly income. For example, if you want to apply for 1 thousand pounds a year, your income must be at least 2 thousand pounds a year.

# The Wellbeing of Future Generations Act 2015



This is a law about improving life in Wales for people now, and in the future.

To achieve the aims of this law, we must:



- Think about how our decisions might effect people in the future.



- Work better with people, communities, and other organisations.



- Work together to stop problems like **poverty**, **health inequality** and **climate change**.



**Poverty** is when someone does not have enough money to live on.



**Health inequality** means people don't always get equal chances to have good health. For example, maybe because of where they live.



**Climate change** means the change of the earth's temperature and weather conditions. It is caused by things like oil and gas.



We want organisations to work better together.



We want organisations to think about how their work fits in with other work that is going on.



In your application, please think about these things.



Please explain your plans for now, and the future.  
We want to see how you plan to work alongside others.

# Hard words

## Climate change

This means the change of the earth's temperature and weather conditions. It is caused by things like oil and gas.

## Health inequality

Health inequality means people don't always get equal chances to have good health. For example, maybe because of where they live.

## Poverty

This is when someone does not have enough money to live on.